



homewise®  
HOMES

AT DESERT SAGE

STARLING

3 BR • 2 BATH • 1,533 SF



NORTHERN NM



SOUTHERN NM

Elevations shown are artist concepts for informational purposes only and are not precise representations.

The homes at Desert Sage are built to the highest standards, embracing quality, value and energy efficiency. At Homewise Homes®, we believe *everyone* deserves to live well.



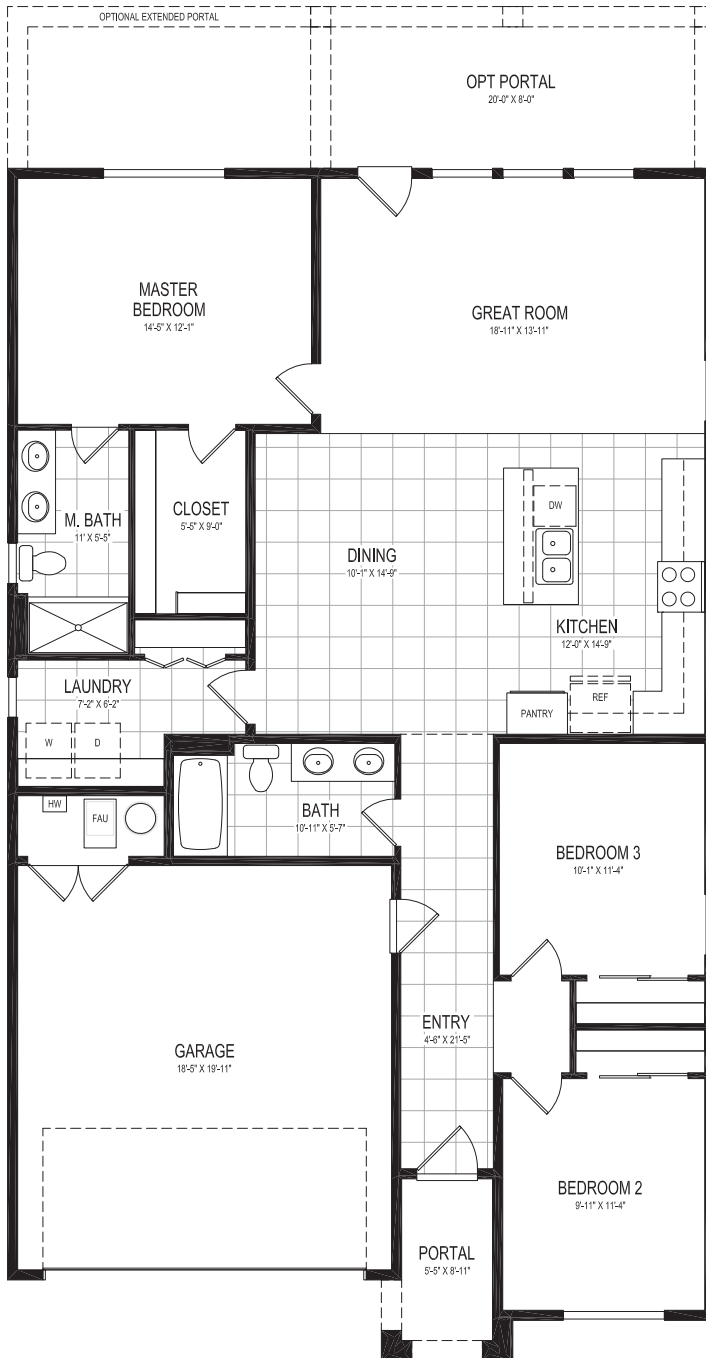
**homewise**<sup>®</sup>  
**HOMES**


AT DESERT SAGE


## STARLING

3 bedroom, 2 bath | 1,533 SF heated | 2-car garage

Options: rear/extended portal



Ashley Sisneros   
Associate Broker  
505.490.7860  
asisneros@homewise.org  
NMREL# 53446

Saraí Arenas   
Associate Broker  
505.955.7049  
sarenas@homewise.org  
NMREL# 52437

Erin Bryant   
Listing Team Manager  
505.216.8284  
ebryant@homewise.org  
NMREL# 51321

Homewise, Inc. 1301 Siler Rd, Bldg D, Santa Fe, NM 87507 505.983.WISE(9473) [www.homewise.org/desert-sage](http://www.homewise.org/desert-sage)

Income or other restrictions may apply. Elevations shown are artist concepts for informational purposes only and are not precise representations. Actual construction may vary. Floor plans may vary per elevation. All room sizes are approximate. Continuing a policy of constant research, design and improvement, Homewise Inc. reserves the right of price, plan, specification and design change without notice or prior obligation. Check with Real Estate sales personnel to determine which lots are available for a specific house plan.

Aaron Fowler  Qualifying Broker NMREL#16240

HW4522 10/21

