



homewise[®]
HOMES

AT DESERT SAGE

KESTREL

3 BR • 2.5 BATH • 2,190 SF



NORTHERN NM



SOUTHERN NM

Elevations shown are artist concepts for informational purposes only and are not precise representations.

The homes at Desert Sage are built to the highest standards, embracing quality, value and energy efficiency. At Homewise Homes[®], we believe *everyone* deserves to live well.



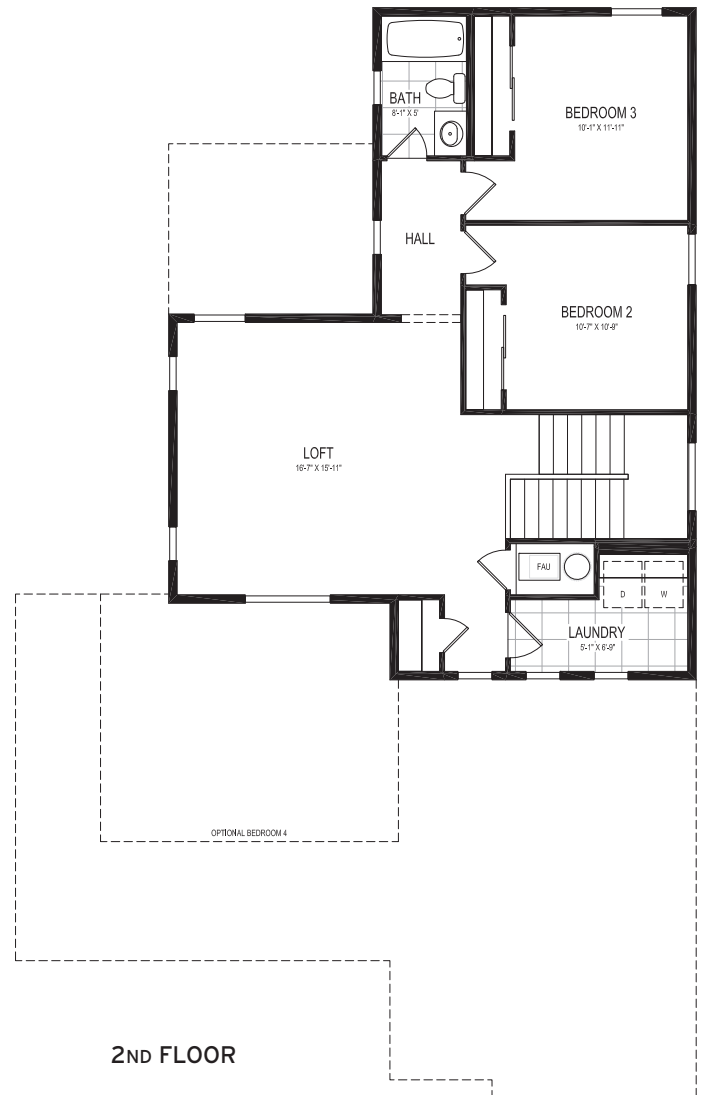
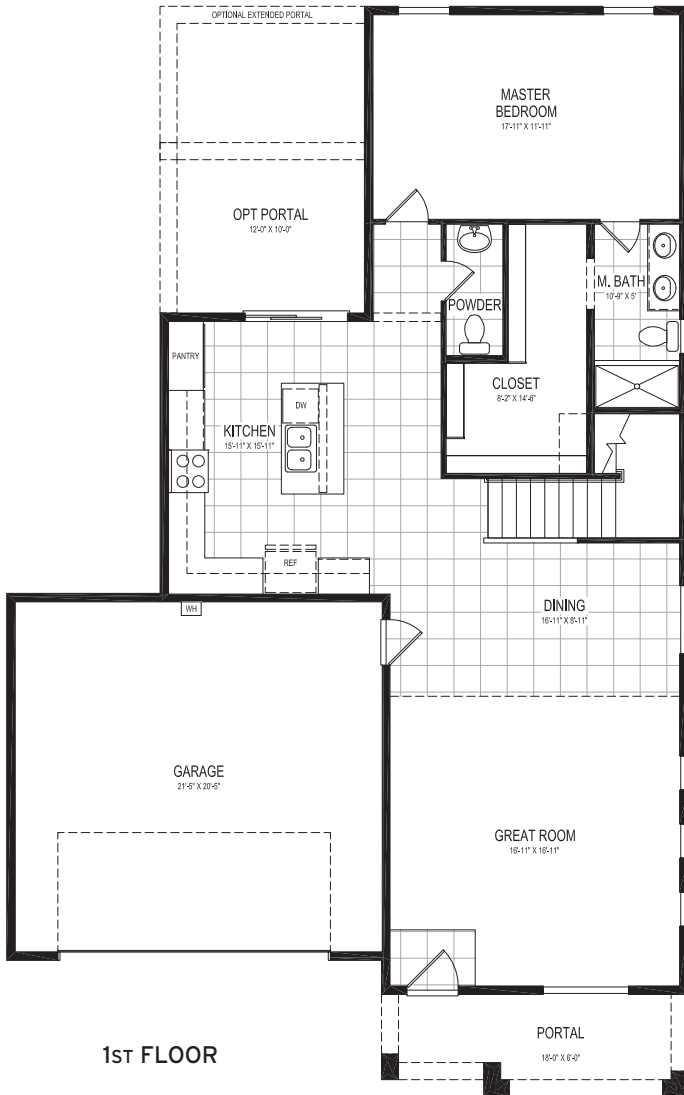
homewise[®]
HOMES

AT DESERT SAGE

KESTREL

3 bedroom, 2.5 bath | 2,190 SF heated | 2-car garage

Options: 4th bedroom, rear/extended portal



Ashley Sisneros | Associate Broker | 505.490.7860 | asisneros@homewise.org | NMREL# 53446

Saraf Arenas | Associate Broker | 505.955.7049 | sarenas@homewise.org | NMREL# 52437

Erin Bryant | Listing Team Manager | 505.216.8284 | ebryant@homewise.org | NMREL# 51321

Homewise, Inc. 1301 Siler Rd, Bldg D, Santa Fe, NM 87507 505.983.WISE(9473) www.homewise.org/desert-sage

Income or other restrictions may apply. Elevations shown are artist concepts for informational purposes only and are not precise representations. Actual construction may vary. Floor plans may vary per elevation. All room sizes are approximate. Continuing a policy of constant research, design and improvement, Homewise Inc. reserves the right of price, plan, specification and design change without notice or prior obligation. Check with Real Estate sales personnel to determine which lots are available for a specific house plan.

Aaron Fowler Qualifying Broker NMREL#16240

HW4525 10/21

