



homewise®  
HOMES

at EL CAMINO  
CROSSING

## MIXED-USE UNITS

INTERIOR UNIT, BLDG D

1,126 S.F. HEATED + 67 S.F. BALCONY



Find your home at El Camino Crossing, a live/work community in the heart of Santa Fe.

Mixed-use interior units:  
\$389,500

Elevations shown are artist concepts for informational purposes only and are not precise representations.

The homes at El Camino Crossing are built to the highest standards, embracing quality, value and energy efficiency. At Homewise Homes®, we believe everyone deserves to live well.



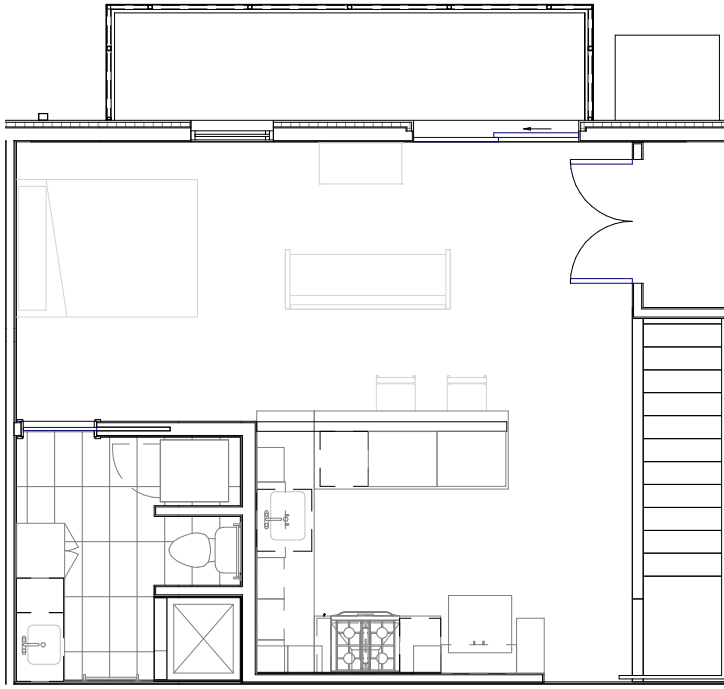
homewise®  
HOMES

at EL CAMINO  
CROSSING

## MIXED-USE UNITS

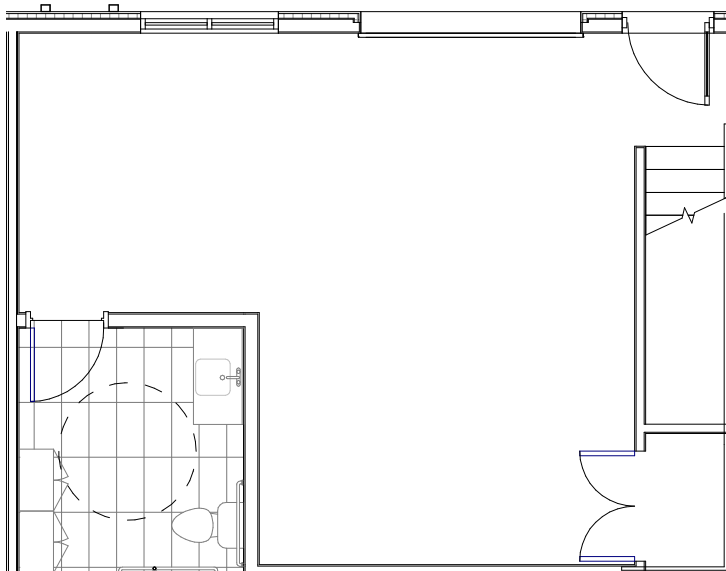
INTERIOR UNIT, BLDG D

1,126 S.F. HEATED + 67 S.F. BALCONY



second floor


- Roll-up garage door
- Balcony
- Stainless Steel appliance package
- Washer and dryer
- Solid surface white spec kitchen countertops
- Luxury vinyl plank flooring on 2nd floor
- Sealed concrete floor on 1st floor
- Bathroom floor Daltile tile; shower wall and floor tile
- Ceiling fans
- 2 solar panels



first floor

Ashley Sisneros   
Associate Broker  
505.490.7860  
asisneros@homewise.org  
NMREL# 53446

Erin Bryant   
Listing Team Manager  
505.216.8284  
ebryant@homewise.org  
NMREL# 51321

Aaron Fowler  Qualifying Broker NMREL#16240



HW4536 12/21

Homewise, Inc. 1301 Siler Rd, Bldg D, Santa Fe, NM 87507 505.983.WISE(9473) www.homewise.org/el-camino-crossing

Income or other restrictions may apply. Elevations shown are artist concepts for informational purposes only and are not precise representations. Actual construction may vary. Floor plans may vary per elevation. All room sizes are approximate. Continuing a policy of constant research, design and improvement, Homewise Inc. reserves the right of price, plan, specification and design change without notice or prior obligation. Check with Real Estate sales personnel to determine which lots are available for a specific house plan.