



homewise<sup>®</sup>  
HOMES

AT DESERT SAGE

LARK

3 BR • 2 BATH • 1,414 SF



NORTHERN NM



SOUTHERN NM

Elevations shown are artist concepts for informational purposes only and are not precise representations.

The homes at Desert Sage are built to the highest standards, embracing quality, value and energy efficiency. At Homewise Homes<sup>®</sup>, we believe *everyone* deserves to live well.

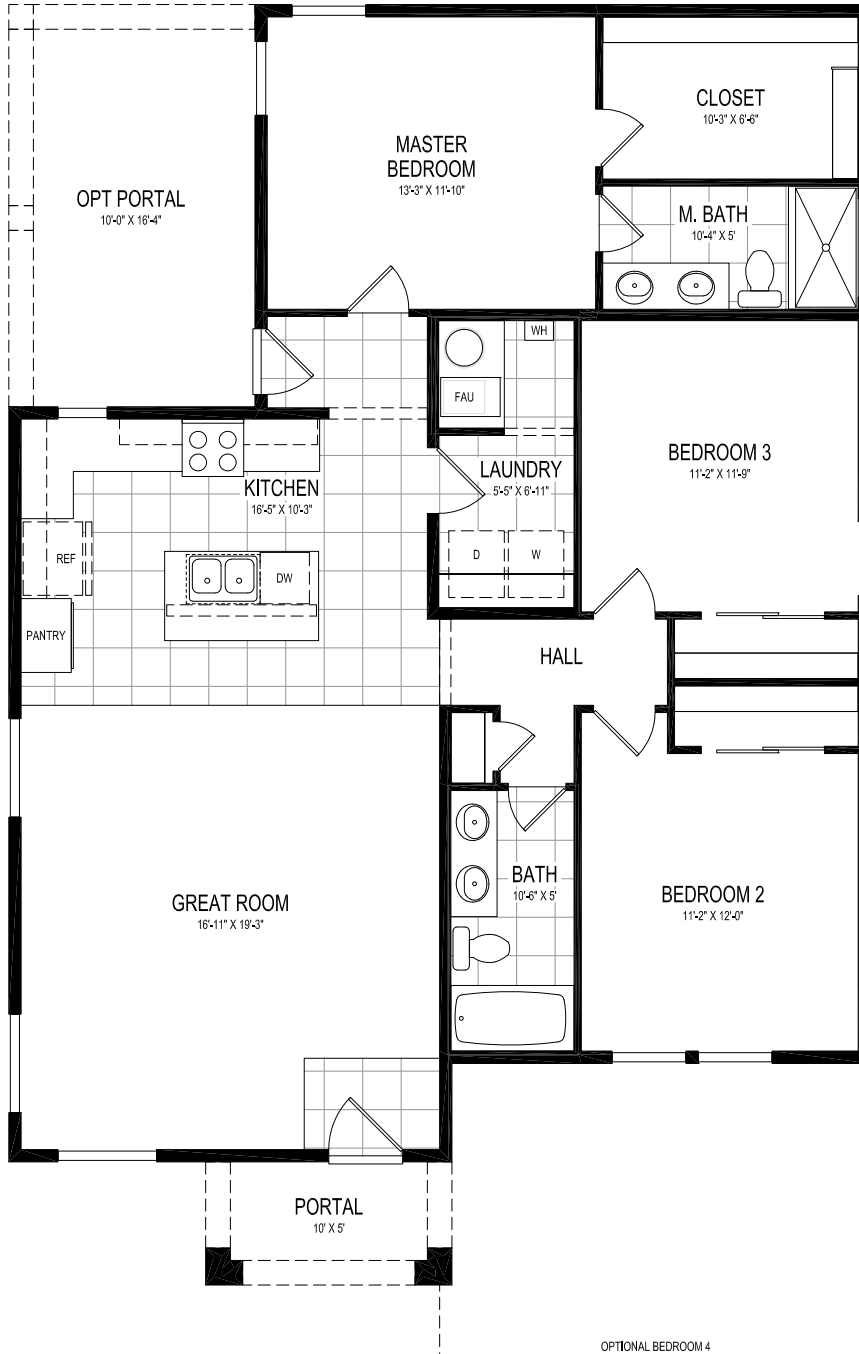


**homewise**<sup>®</sup>  
**HOMES**

AT DESERT SAGE

## LARK

3 bedroom, 2 Bath | 1,414 SF heated



### OPTIONS:

- 4th bedroom, additional \$35,000
- rear portal
- courtyard wall
- rear detached garage or carport with optional casita/loft

Ashley Sisneros 

Associate Broker

505.490.7860

asisneros@homewise.org

NMREL# 53446

Erin Bryant 

Listing Team Manager

505.216.8284

ebryant@homewise.org

NMREL# 51321

Homewise, Inc. 1301 Siler Rd, Bldg D, Santa Fe, NM 87507 505.983.WISE(9473) [www.homewise.org/desert-sage](http://www.homewise.org/desert-sage)

Income or other restrictions may apply. Elevations shown are artist concepts for informational purposes only and are not precise representations. Actual construction may vary. Floor plans may vary per elevation. All room sizes are approximate. Continuing a policy of constant research, design and improvement, Homewise Inc. reserves the right of price, plan, specification and design change without notice or prior obligation. Check with Real Estate sales personnel to determine which lots are available for a specific house plan.