



homewise[®]
HOMES

AT DESERT SAGE ———

COMMUNITY OVERVIEW




LARK MODEL HOME
Southern Plan

Photo shown may reflect upgrades. See back side for full disclosures.

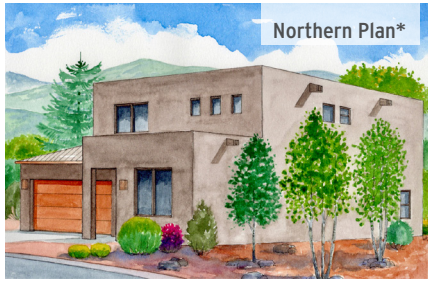
Desert Sage Community Features:

- Mountain views
- Designated open space and multiple trails
- Close to Santa Fe Community College
- Set within the school districts of Amy Biehl Community School, Milagro Middle School and Santa Fe High School

Ashley Sisneros  | Associate Broker | 505.490.7860 | asisneros@homewise.org | NMREL# 53446

Erin Bryant  | Listing Team Manager/Broker | 505.216.8284 | ebryant@homewise.org | NMREL REC-2023-0136

The homes at Desert Sage are built to the highest standards, embracing quality, value and energy efficiency. At Homewise Homes[®], we believe *everyone* deserves to live well.



MERLIN - SPEC HOME

3 BR | 2.5 Bath | 1,957 SF

\$570,000




KESTREL - SPEC HOME

4 BR | 2.5 Bath | 2,190 SF

from \$650,000

* All models are available in a Northern or Southern plan. Elevations shown are artist concepts for informational purposes only and are not precise representations. Square footage is based on interior measurements. Garage placement may vary.

Homewise, Inc. 1301 Siler Rd, Bldg D, Santa Fe, NM 87507 505.983.WISE (9473) www.homewise.org/desert-sage

Victor Ortega  Qualifying Broker NMREL REC-2022-0635

Income or other restrictions may apply. Photos of homes may reflect upgrades; refer to the 'Features & Upgrades' flyer for a list of standard features and available upgrades. Actual construction may vary. Floor plans may vary per elevation. All room sizes are approximate. Square footage is based on interior measurements. Continuing a policy of constant research, design and improvement, Homewise Inc. reserves the right of price, plan, specification and design change without notice or prior obligation. Check with Real Estate sales personnel to determine which lots are available for a specific house plan.



HW4516 5/23



LOTS AVAILABLE IN PHASE 2

Lot	Model
17	Merlin - SPEC home
31	Kestrel - SPEC home with 4th bedroom option

PLAN TYPES

	floors	bed/bath	sq. ft.	garage
Merlin:	2	3/2.5	1,957	2-car attached included
Kestrel:	2	3/2.5	2,190	2-car attached included

Square footage is based on interior measurements.



homewise®
HOMES

AT DESERT SAGE

MERLIN

3 BR • 2.5 BATH • 1,957 SF



NORTHERN NM



SOUTHERN NM

Elevations shown are artist concepts for informational purposes only and are not precise representations.

The homes at Desert Sage are built to the highest standards, embracing quality, value and energy efficiency. At Homewise Homes®, we believe *everyone* deserves to live well.



homewise[®]
HOMES

AT DESERT SAGE

MERLIN

3 bedroom, 2.5 bath | 1,957 SF heated | 2-car garage

Options: 4th bedroom (replaces study); extended rear portal



Ashley Sisneros | Associate Broker | 505.490.7860 | asisneros@homewise.org | NMREL# 53446

Erin Bryant | Listing Team Manager/Broker | 505.216.8284 | ebryant@homewise.org | NMRELREC-2023-0136

Homewise, Inc. 1301 Siler Rd, Bldg D, Santa Fe, NM 87507 505.983.WISE(9473) www.homewise.org/desert-sage

Income or other restrictions may apply. Elevations shown are artist concepts for informational purposes only and are not precise representations. Actual construction may vary. Floor plans may vary per elevation. All room sizes are approximate. Square footage is based on interior measurements. Continuing a policy of constant research, design and improvement, Homewise Inc. reserves the right of price, plan, specification and design change without notice or prior obligation. Check with Real Estate sales personnel to determine which lots are available for a specific house plan.



homewise[®]
HOMES

AT DESERT SAGE

KESTREL

3 BR • 2.5 BATH • 2,190 SF



NORTHERN NM



SOUTHERN NM

Elevations shown are artist concepts for informational purposes only and are not precise representations.

The homes at Desert Sage are built to the highest standards, embracing quality, value and energy efficiency. At Homewise Homes[®], we believe *everyone* deserves to live well.



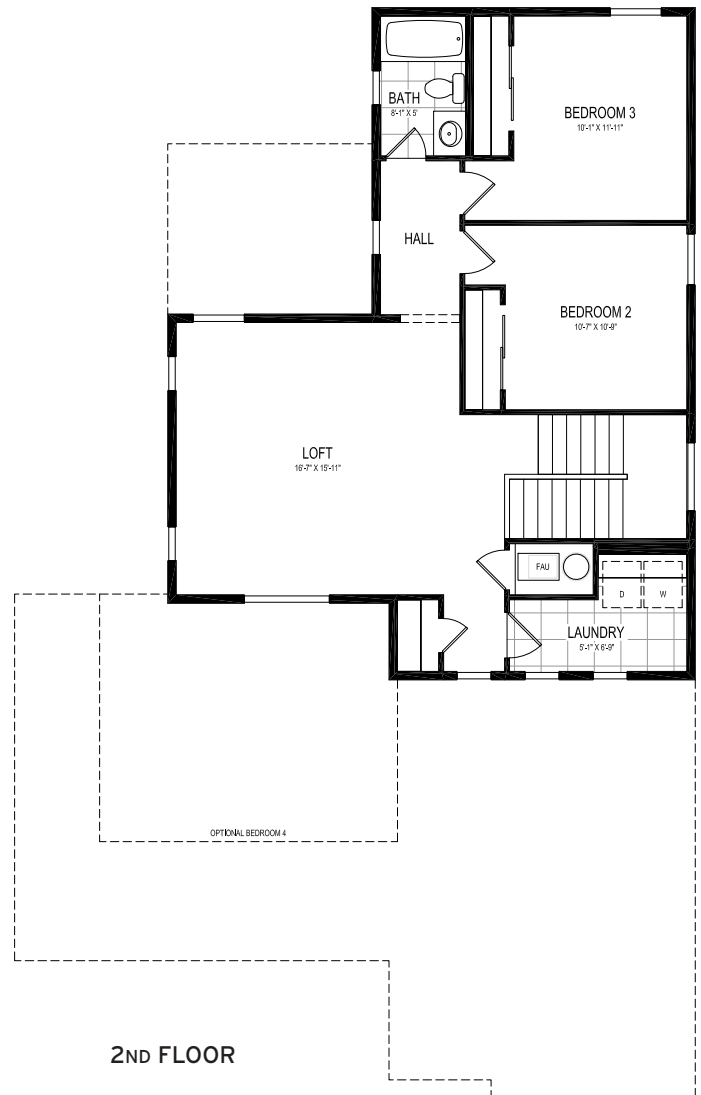
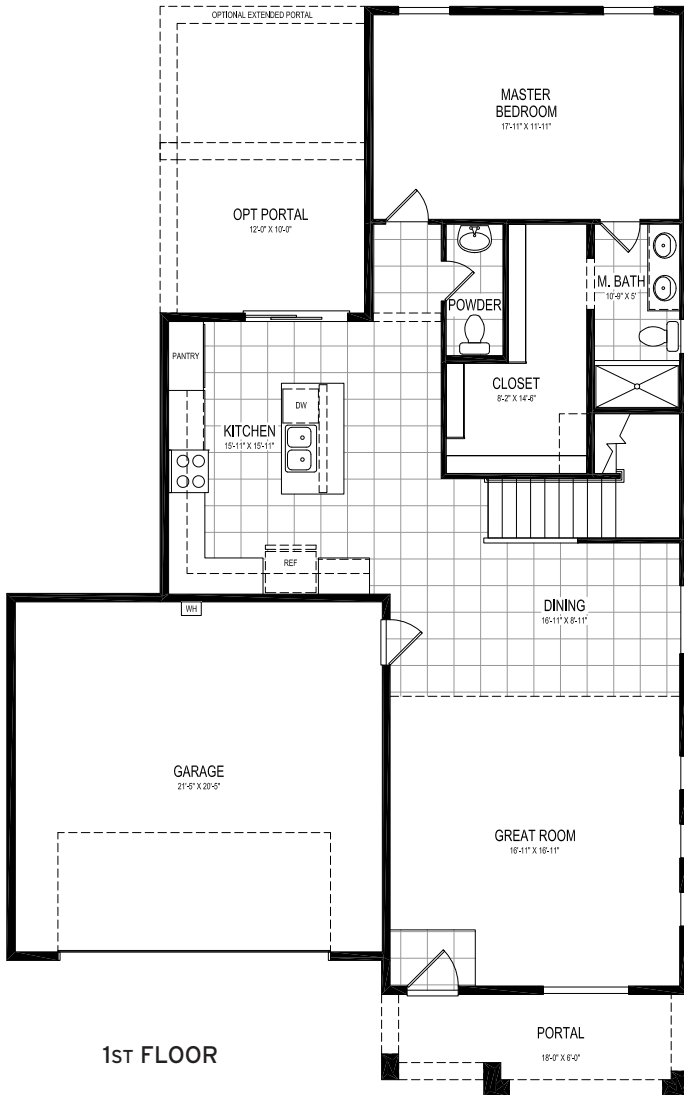
homewise®
HOMES


AT DESERT SAGE

KESTREL

3 bedroom, 2.5 bath | 2,190 SF heated | 2-car garage

Options: 4th bedroom, rear/extended portal



Ashley Sisneros  | Associate Broker | 505.490.7860 | asisneros@homewise.org | NMREL# 53446

Erin Bryant  | Listing Team Manager/Broker | 505.216.8284 | ebryant@homewise.org | NMRELREC-2023-0136

Homewise, Inc. 1301 Siler Rd, Bldg D, Santa Fe, NM 87507 505.983.WISE(9473) www.homewise.org/desert-sage

Income or other restrictions may apply. Elevations shown are artist concepts for informational purposes only and are not precise representations. Actual construction may vary. Floor plans may vary per elevation. All room sizes are approximate. Square footage is based on interior measurements. Continuing a policy of constant research, design and improvement, Homewise Inc. reserves the right of price, plan, specification and design change without notice or prior obligation. Check with Real Estate sales personnel to determine which lots are available for a specific house plan.




homewise[®]
HOMES

AT DESERT SAGE

EXCEPTIONAL STANDARD FEATURES

- 12x12" ceramic tile flooring in great room, kitchen, bathrooms and laundry areas
- Carpeting in bedrooms and upstairs area for 2-story models
- Granite kitchen countertops with stainless steel undermount sink
- Flat panel maple cabinetry
- Stainless steel Whirlpool® kitchen appliances
- White LG® front load washer and electric dryer
- Low-E vinyl windows with Argon gas
- Refrigerated air conditioning; high-efficiency forced air heating
- Ceiling fans in great room and owners' bedroom
- Granite bathroom countertops with undermount vanity sinks
- Moen® bath fixtures
- 12x12" ceramic tile bath surrounds
- Full LED light package with lighting in every room
- 2 panel entry door and 5 panel interior doors
- Front yard landscaping
- Side and backyard fencing

Ashley Sisneros  | Associate Broker | 505.490.7860 | asisneros@homewise.org | NMREL# 53446

Erin Bryant  | Listing Team Manager/Broker | 505.216.8284 | ebryant@homewise.org | NMREL REC-2023-0136

Homewise, Inc. 1301 Siler Rd, Bldg D, Santa Fe, NM 87507 505.983.WISE(9473) www.homewise.org/desert-sage

Victor Ortega  Qualifying Broker NMREL REC-2022-0635

Continuing a policy of constant research, design and improvement, Homewise Inc. reserves the right of price, plan, specification and design change without notice or prior obligation.

HW4517 3/23

