

LIVE/WORK SPACES

1108 PASEO CORAZON, BLDG E, 10 UNITS
EACH UNIT: 1,126 S.F. HEATED



Find your home at El Camino Crossing, a live/work community in the heart of Santa Fe.

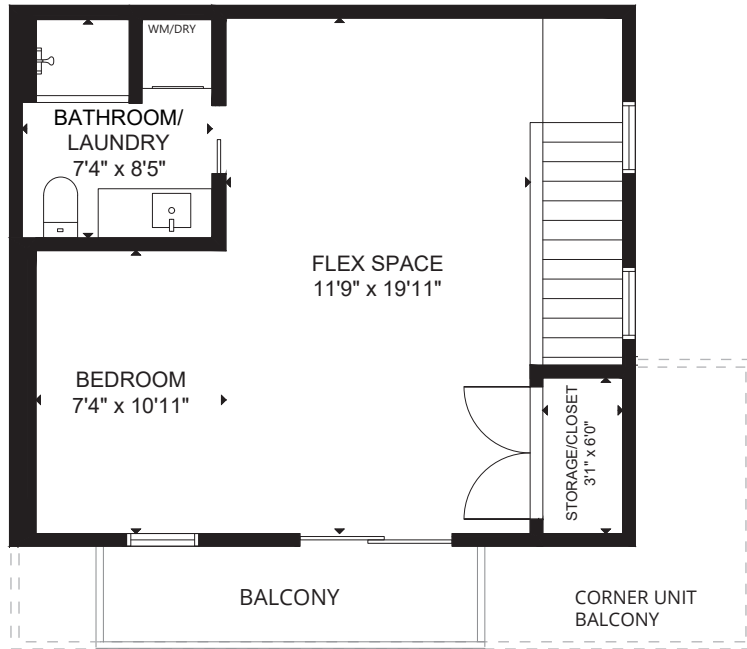
Interior units: \$389,500

Corner units: \$403,500

The homes at El Camino Crossing are built to the highest standards, embracing quality, value and energy efficiency. At Homewise Homes[®], we believe everyone deserves to live well.

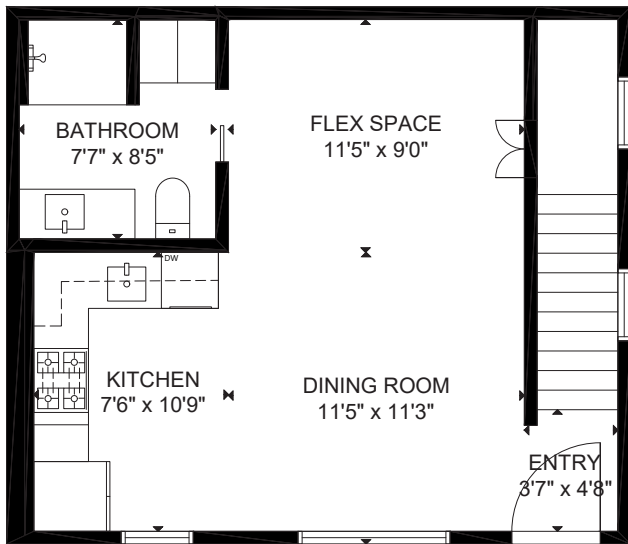
LIVE/WORK SPACES

1108 PASEO CORAZON, BLDG E, 10 UNITS
EACH UNIT: 1,126 S.F. HEATED




FLOOR 2

- Balcony
- Stainless Steel appliance package
- Washer and dryer
- Solid surface white spec kitchen countertops
- Luxury vinyl plank flooring on 2nd floor
- Sealed concrete floor on 1st floor
- Bathroom floor Daltile tile; shower wall and floor tile
- Ceiling fans
- 2 solar panels



FLOOR 1

Erik Stratton 
Associate Broker
505.216.8542
EStratton@homewise.org
NMREL# 51332

Ashley Sisneros 
Associate Broker
505.490.7860
ASisneros@homewise.org
NMREL# 53446

Erin Bryant 
Listing Team Manager/Broker
505.216.8284
EBryant@homewise.org
NMREL REC-2023-0136