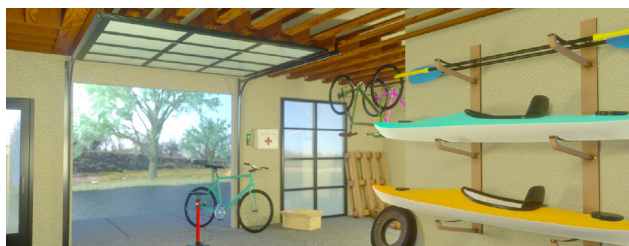


MIXED-USE UNITS

INTERIOR UNIT, BLDG D

1,126 S.F. HEATED + 67 S.F. BALCONY



Find your home at El Camino Crossing, a live/work community in the heart of Santa Fe.

Mixed-use interior units:
\$389,500

Elevations shown are artist concepts for informational purposes only and are not precise representations.

The homes at El Camino Crossing are built to the highest standards, embracing quality, value and energy efficiency. At Homewise Homes[®], we believe everyone deserves to live well.

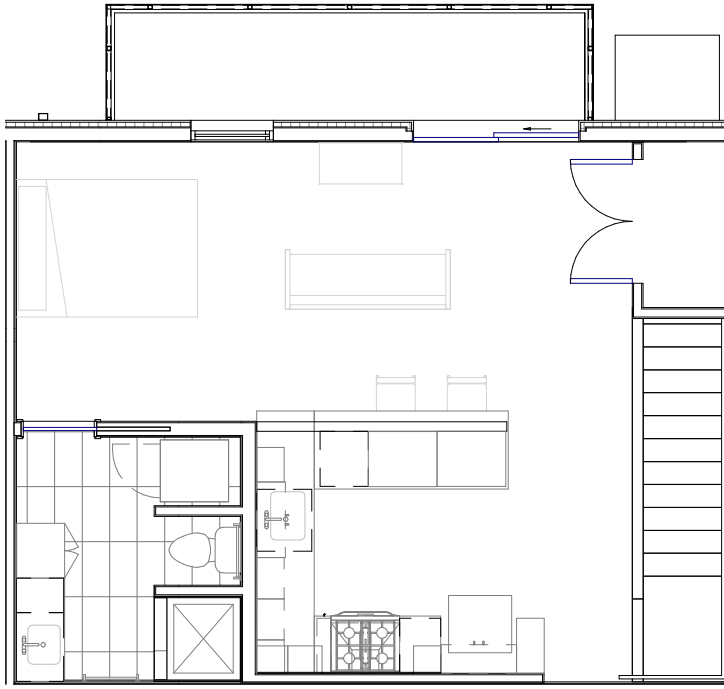


homewise®
HOMES
at EL CAMINO
CROSSING

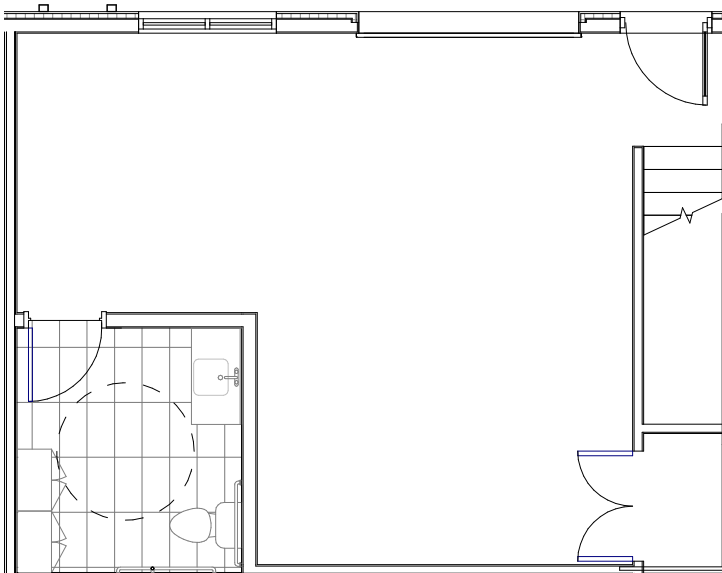
MIXED-USE UNITS

INTERIOR UNIT, BLDG D

1,126 S.F. HEATED + 67 S.F. BALCONY



second floor




first floor

- Roll-up garage door
- Balcony
- Stainless Steel appliance package
- Washer and dryer
- Solid surface white spec kitchen countertops
- Luxury vinyl plank flooring on 2nd floor
- Sealed concrete floor on 1st floor
- Bathroom floor Daltile tile; shower wall and floor tile
- Ceiling fans
- 2 solar panels

Ashley Sisneros 
Associate Broker
505.490.7860
asisneros@homewise.org
NMREL# 53446

Erin Bryant 
Listing Team Manager/Broker
505.216.8284
ebryant@homewise.org
NMRELREC-2023-0136

Victor Ortega  Qualifying Broker NMRELREC-2022-0635



HW4536 3/23

Homewise, Inc. 1301 Siler Rd, Bldg D, Santa Fe, NM 87507 505.983.WISE(9473) www.homewise.org/el-camino-crossing

Income or other restrictions may apply. Elevations shown are artist concepts for informational purposes only and are not precise representations. Actual construction may vary. Floor plans may vary per elevation. All room sizes are approximate. Square footage is based on interior measurements. Continuing a policy of constant research, design and improvement, Homewise Inc. reserves the right of price, plan, specification and design change without notice or prior obligation. Check with Real Estate sales personnel to determine which lots are available for a specific house plan.

MIXED-USE UNITS

CORNER UNIT, BLDG D

1,126 S.F. HEATED + 122 S.F. BALCONY



Find your home at El Camino Crossing, a live/work community in the heart of Santa Fe.

Mixed-use corner units:
\$403,500

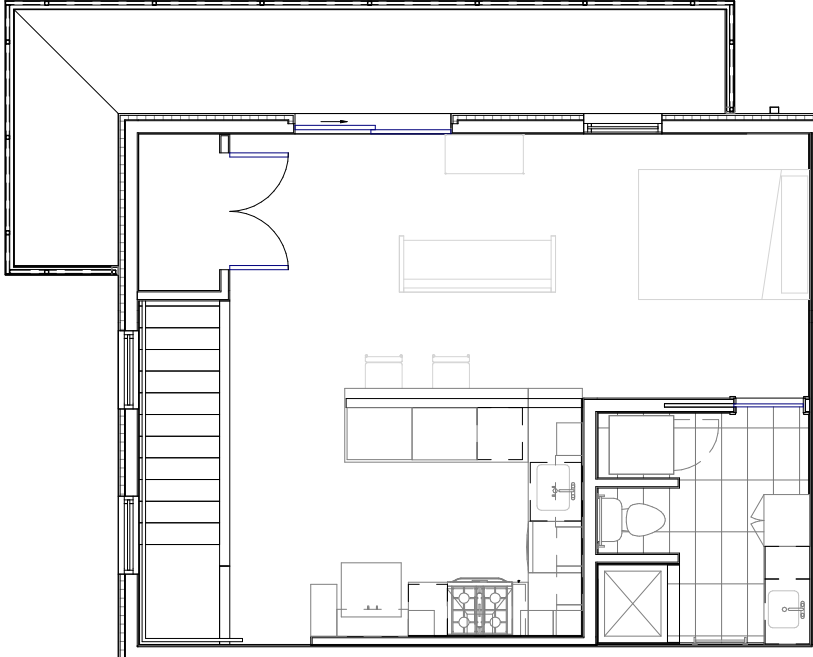
Elevations shown are artist concepts for informational purposes only and are not precise representations.

The homes at El Camino Crossing are built to the highest standards, embracing quality, value and energy efficiency. At Homewise Homes[®], we believe everyone deserves to live well.

MIXED-USE UNITS

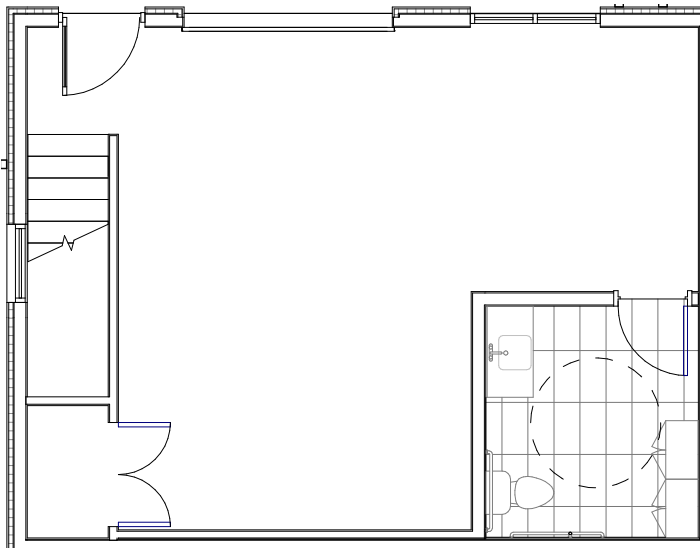
CORNER UNIT, BLDG D

1,126 S.F. HEATED + 122 S.F. BALCONY



second floor

- Roll-up garage door
- Wrap around balcony
- Stainless Steel appliance package
- Washer and dryer
- Solid surface white spec kitchen countertops
- Luxury vinyl plank flooring on 2nd floor
- Sealed concrete floor on 1st floor
- Bathroom floor Daltile tile; shower wall and floor tile
- Ceiling fans
- 2 solar panels



first floor

Ashley Sisneros 
Associate Broker
505.490.7860
asisneros@homewise.org
NMREL# 53446

Erin Bryant 
Listing Team Manager/Broker
505.216.8284
ebryant@homewise.org
NMREL REC-2023-0136