



# Sombra Del Oeste

---

A HOMEWISE HOMES® COMMUNITY

8948 MOUNTAIN ASH AVE SW  
ALBUQUERQUE, NM 87121



**Brennan Posen**

Qualifying Broker  
REC-2025-0558

505-618-0307 | [BPosen@homewise.org](mailto:BPosen@homewise.org)

**Maria Arguello**

Broker  
REC-2026-0225

505-470-2597 | [MArguello@homewise.org](mailto:MArguello@homewise.org)



# Sombra Del Oeste

A HOMEWISE HOMES® COMMUNITY

EXPLORE THE COMMUNITY



## Community Features

---

- AN ENERGY-EFFICIENT ALL-ELECTRIC COMMUNITY
- ADJACENT TO THE AMOLE ARROYO AND ALBUQUERQUE'S EXPANSIVE TRAIL SYSTEM WITH DIRECT ACCESS TO THE CITY'S OPEN SPACE NETWORK
- STEPS FROM SOLARE COLLEGIATE CHARTER SCHOOL WITH MARY ANN BINFORD ELEMENTARY, TRUMAN MIDDLE SCHOOL, AND ATRISCO HERITAGE ACADEMY HIGH SCHOOL ALL JUST MINUTES AWAY
- MODERN CRAFTSMAN-STYLE ARCHITECTURE
- MIX OF SINGLE AND TWO-CAR GARAGE OPTIONS
- DEVELOPED BY HOMEWISE – COMMITTED TO BUILDING VIBRANT, ACCESSIBLE, AND SUSTAINABLE COMMUNITIES IN ALBUQUERQUE

Brennan Posen | Qualifying Broker | REC-2025-0558 | 505-618-0307 | [BPosen@homewise.org](mailto:BPosen@homewise.org)

Maria Arguello | Broker | REC-2026-0225 | 505-470-2597 | [MArguello@homewise.org](mailto:MArguello@homewise.org)

8948 Mountain Ash Ave SW, Albuquerque, NM 87121 | Homewise, Inc. 505-243-6566 [www.homewise.org](http://www.homewise.org)



# Sombra Del Oeste

A HOMESIDE HOMES® COMMUNITY

HOMESITE MAP & AVAILABILITY

**(A) Sandia**  
2 BR 2 Bath 1,176 sf

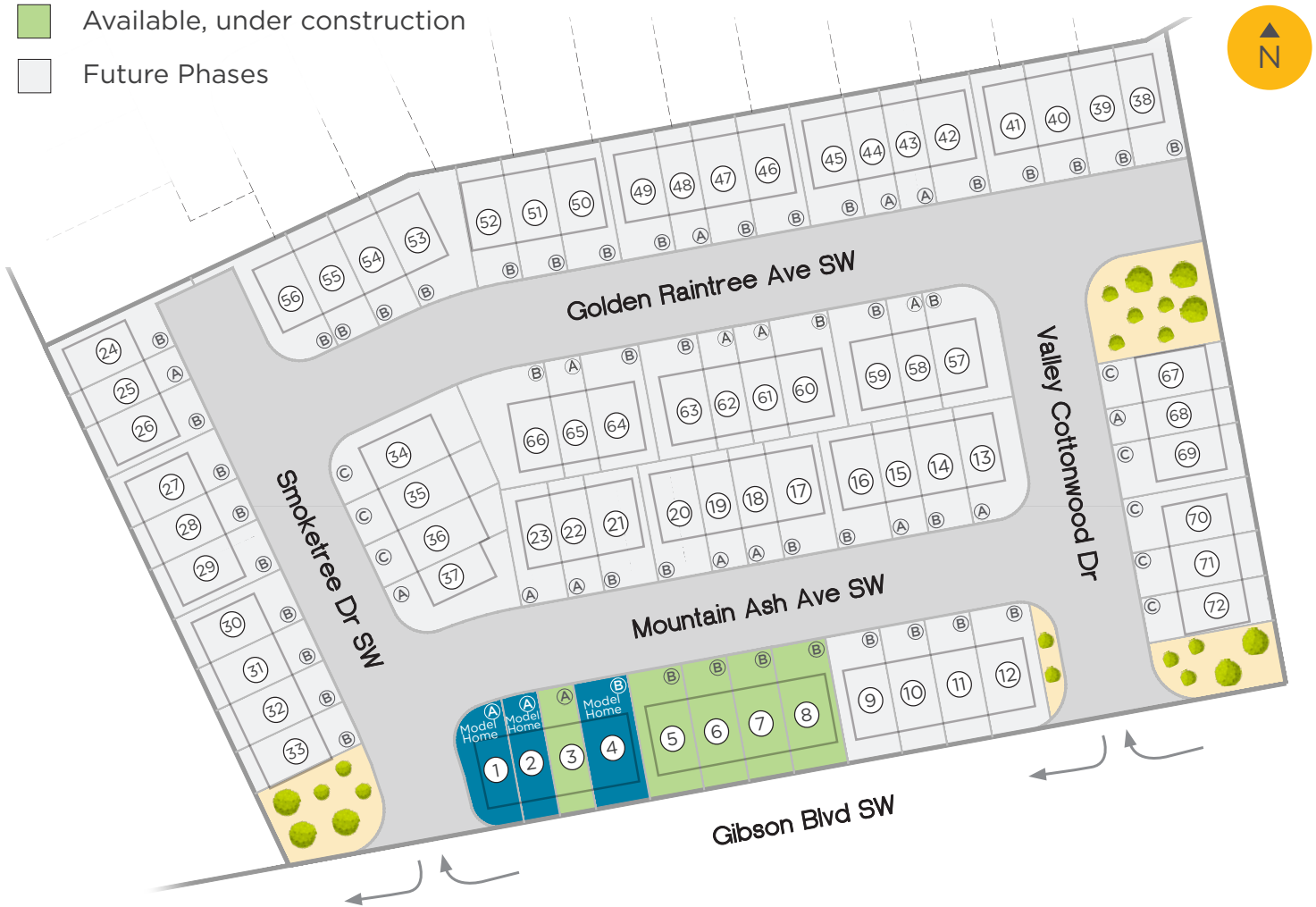
**(B) Manzano**  
3 BR 2 Bath 1,416 sf

**(C) Jemez**  
3 BR 2 Bath 1,638 sf

- 1 8948 Mountain Ash
- 2 8944 Mountain Ash
- 3 8940 Mountain Ash
- 4 8936 Mountain Ash

- 5 8932 Mountain Ash
- 6 8928 Mountain Ash
- 7 8924 Mountain Ash
- 8 8920 Mountain Ash

- Model Home
- Sold
- Available, under construction
- Future Phases



Brennan Posen | Qualifying Broker | REC-2025-0558 | 505-618-0307 | BPosen@homewise.org

Maria Arguello | Broker | REC-2026-0225 | 505-470-2597 | MArguello@homewise.org

# Sombra Del Oeste

A HOMEWISE HOMES® COMMUNITY

SURROUNDING AREA



Brennan Posen | Qualifying Broker | REC-2025-0558 | 505-618-0307 | BPosen@homewise.org

Maria Arguello | Broker | REC-2026-0225 | 505-470-2597 | MArguello@homewise.org

8948 Mountain Ash Ave SW, Albuquerque, NM 87121 | Homewise, Inc. 505-243-6566 www.homewise.org



# Sombra Del Oeste

A HOMEWISE HOMES® COMMUNITY

FIND YOUR HOME



## Sandia

2 BR | 2.5 BATH | 1,176 SF

\$300,000



## Manzano

3 BR | 2.5 BATH | 1,416 SF

\$325,000



## Jemez

3 BR | 2.5 BATH | 1,638 SF

\$350,000

Brennan Posen | Qualifying Broker | REC-2025-0558 | 505-618-0307 | BPosen@homewise.org

Maria Arguello | Broker | REC-2026-0225 | 505-470-2597 | MArguello@homewise.org

Elevations shown are artist concepts for informational purposes only and are not precise representations.

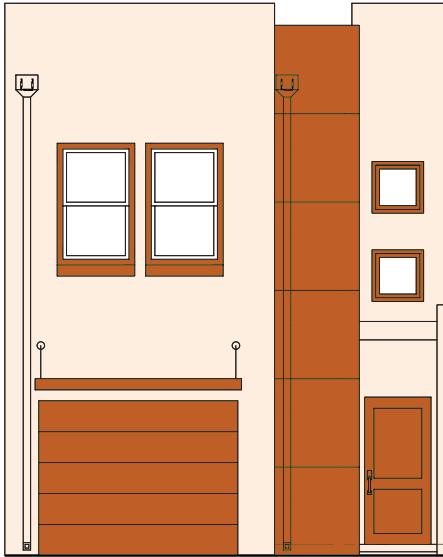
# Sombra Del Oeste

A HOMEWISE HOMES® COMMUNITY

# Sandia

2 BR | 2.5 BATH | 1,176 SF

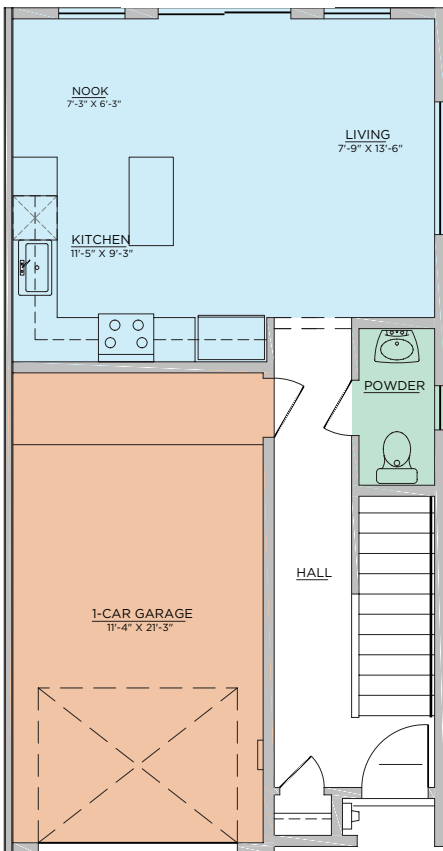
FRONT ELEVATION



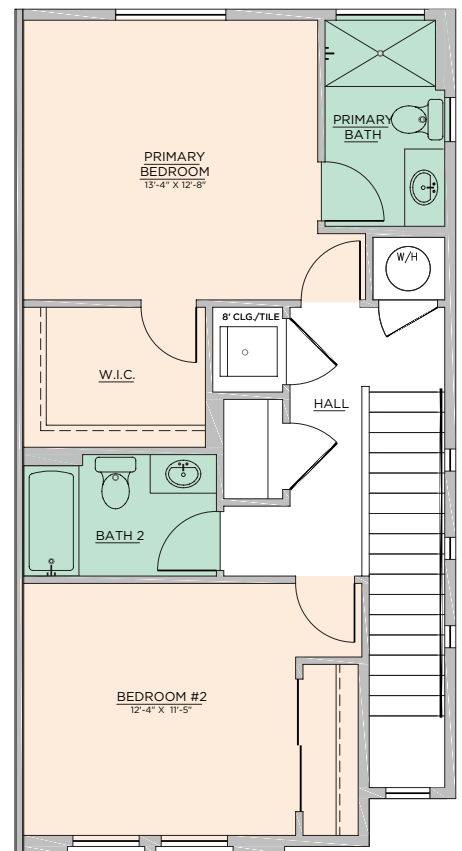
\$300,000



LOWER LEVEL



UPPER LEVEL



Brennan Posen | Qualifying Broker | REC-2025-0558 | 505-618-0307 | BPosen@homewise.org

Maria Arguello | Broker | REC-2026-0225 | 505-470-2597 | MArguello@homewise.org

Elevations shown are artist concepts for informational purposes only and are not precise representations.

# Sombra Del Oeste

A HOMEWISE HOMES® COMMUNITY

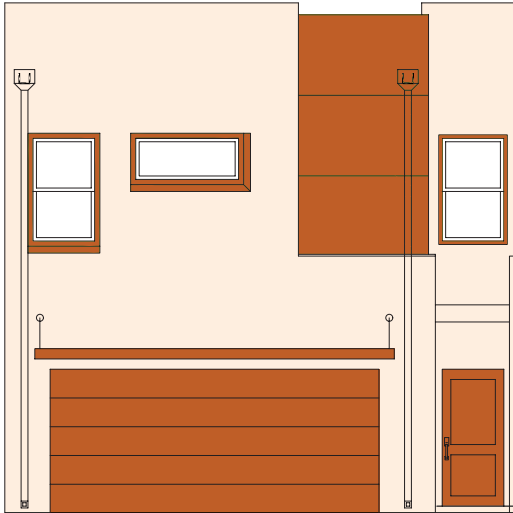
# Manzano

3 BR | 2.5 BATH | 1,416 SF

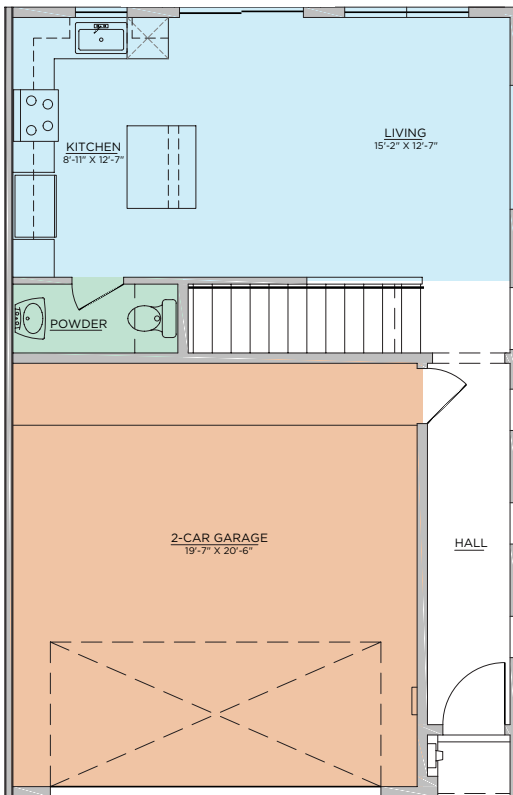
\$325,000



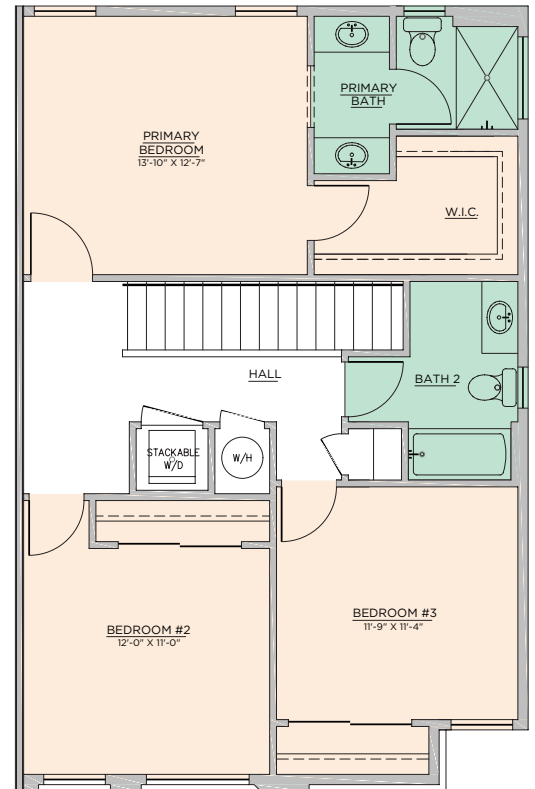
FRONT ELEVATION



LOWER LEVEL



UPPER LEVEL



Brennan Posen | Qualifying Broker | REC-2025-0558 | 505-618-0307 | BPosen@homewise.org

Maria Arguello | Broker | REC-2026-0225 | 505-470-2597 | MArguello@homewise.org

Elevations shown are artist concepts for informational purposes only and are not precise representations.

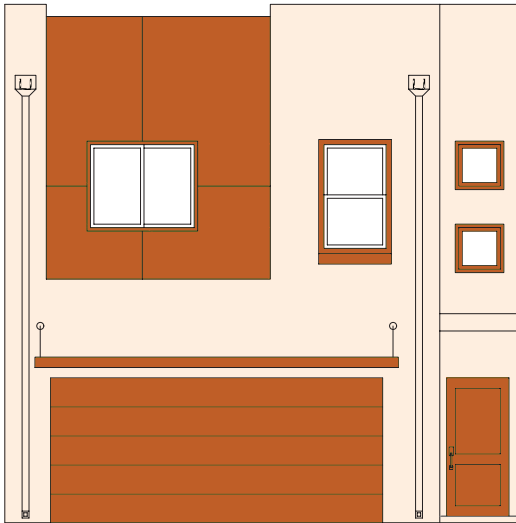
# Sombra Del Oeste

A HOMEWISE HOMES® COMMUNITY

# Jemez

3 BR | 2.5 BATH | 1,638 SF

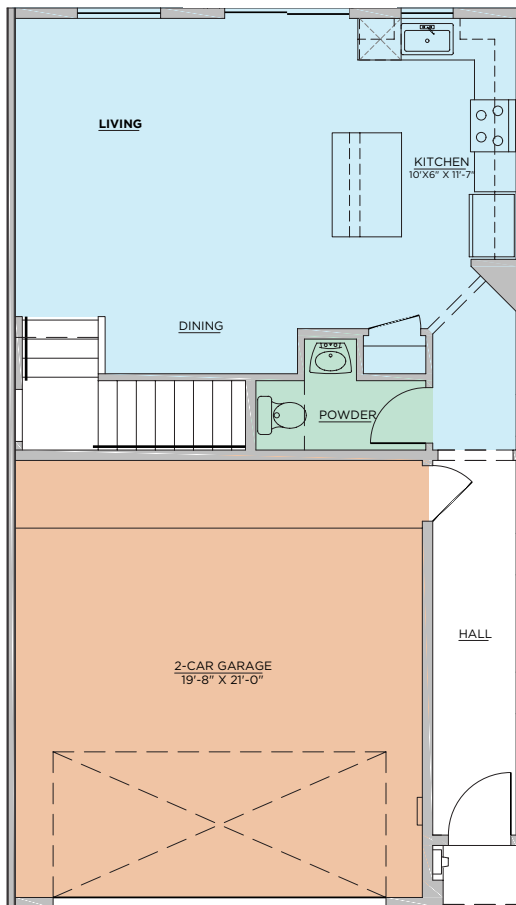
FRONT ELEVATION



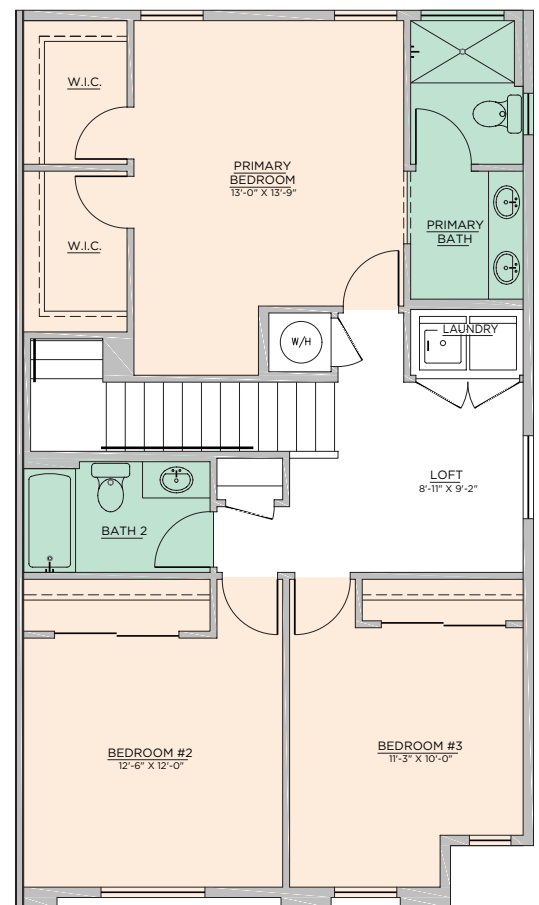
\$350,000



LOWER LEVEL



UPPER LEVEL



Brennan Posen | Qualifying Broker | REC-2025-0558 | 505-618-0307 | BPosen@homewise.org  
Maria Arguello | Broker | REC-2026-0225 | 505-470-2597 | MArguello@homewise.org

Elevations shown are artist concepts for informational purposes only and are not precise representations.

## Exceptional Standard Features

---

- ALL-ELECTRIC COMMUNITY
- GRANITE KITCHEN COUNTERTOPS
- STAINLESS STEEL KITCHEN SINK
- DURABLE MAPLE CABINETS
- STAINLESS STEEL WHIRLPOOL® APPLIANCES
- FRONT LOAD LG® WASHER AND DRYER
- LOW-E VINYL WINDOWS
- LG® HIGH-EFFICIENCY MINI-SPLIT CEILING CASSETTE REFRIGERATED AIR CONDITIONING AND FORCED AIR HEATING
- TILE OR SPC FLOORING IN KITCHEN, BATHROOMS AND LAUNDRY AREAS
- CEILING FAN ROUGH-INS IN GREAT ROOM AND OWNERS' BEDROOM
- UNDERMOUNT RECTANGULAR VANITY SINKS
- MOEN® BATH FIXTURES
- SURFACE VANITY LIGHTING FIXTURES
- 2 PANEL ENTRY DOOR AND SQUARE INTERIOR DOORS
- SIDE AND BACKYARD FENCING
- GARAGE DOOR OPENER
- FRONT YARD LANDSCAPING
- XERISCAPE BACKYARD

Brennan Posen | Qualifying Broker | REC-2025-0558 | 505-618-0307 | BPosen@homewise.org

Maria Arguello | Broker | REC-2026-0225 | 505-470-2597 | MArguello@homewise.org



# Sombra Del Oeste

A **HOMEWISE HOMES®** COMMUNITY

8948 MOUNTAIN ASH AVE SW  
ALBUQUERQUE, NM 87121

**Brennan Posen**

Qualifying Broker  
REC-2025-0558

505-618-0307 | [BPosen@homewise.org](mailto:BPosen@homewise.org)

**Maria Arguello**

Broker  
REC-2026-0225

505-470-2597 | [MArguello@homewise.org](mailto:MArguello@homewise.org)

